

Blackmer®

Expert
Solutions
for Liquid
Terminal
Applications

LIQUID TERMINALS
Product Brochure



Where Innovation Flows


a **DOVER** company

blackmer.com

Blackmer Pumps Used in Liquid Terminal Operations

Blackmer® is the global leader in transfer, transloading and blending solutions for petroleum and chemical liquid-storage terminals. Blackmer Sliding Vane and Screw Pumps have earned this distinction because of their ready compatibility with petroleum products from fuels to asphalt, chemicals, caustics, sulfates and acids, and all types of vegetable and animal oils or fats. Blackmer pumps are designed to run dry for short periods, and perform self-priming and line-stripping duties. Their design also makes them highly energy-efficient and eliminates many of the maintenance concerns inherent in other pump styles.

In short, for liquid-storage terminal applications, nothing beats a Blackmer for reliability, volumetric consistency, efficiency and energy savings in moving liquids into and out of storage facilities, be the mode of transportation be tanker ship, barge, pipeline, railcar or transport truck.

Liquids handled include:

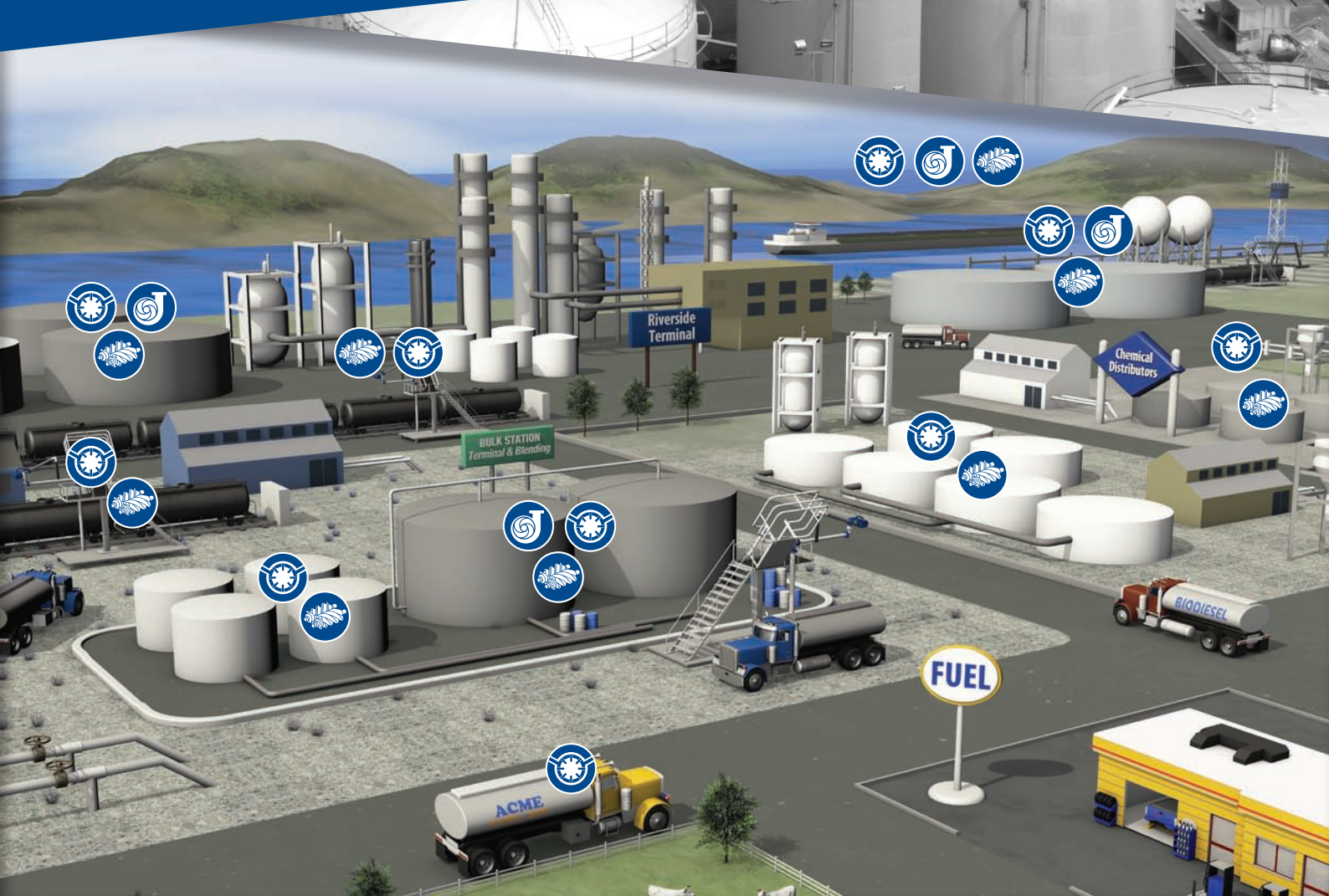
- Crude Oil
- Refined Fuels
 - Gasoline
 - Fuel Oils
 - Lube Oils
 - Ethanol
 - Biodiesel
- Processed Chemicals
- Bitumen, Asphalt
- Potassium Hydroxide (KOH)
- Anti-Gel Agents
- Soy, Palm and other Virgin Vegetable Oils
- Animal Fats

When it comes to optimizing flow performance, reducing costs and increasing profitability, the world's most productive operations share a common demand – **Better Get Blackmer.**

Blackmer Pumps are Designed to Help in Liquid Terminal Operations:

- Improve operational efficiencies on thin and viscous liquid transfer
- Significantly reduce maintenance costs by providing highly reliable, easy-to-maintain pumps
- Save energy through power-efficient pump designs
- Improve uptime performance – pumps are engineered to address the most problematic areas: seals and bearings
- Control quality by ensuring volumetric output consistency to meet blending specifications

	<p>ML/HXL Series Sliding Vane Pumps</p> <p>Designed for high-capacity transfer, top or bottom loading/unloading and blending at the rack. ML and HXL pumps are ideally suited for barge, ship and terminal transfers where their self-priming and high-suction capabilities enable them to strip tanks, barges and railcars clean.</p>		<p>System One® LD17 Centrifugal Pumps</p> <p>Designed for high-volume, severe-duty applications such as unloading barges, ships, railcars and tank trucks, and transferring liquids from terminal tanks to loading platforms.</p>
	<p>TXD Series Sliding Vane Pumps</p> <p>Fast, quiet and highly reliable, the TXD Series is a truck-mounted transfer pump specifically designed for use on tank trucks and transports for the transfer of petroleum products and chemicals.</p>	<p>S Series Twin Screw Pumps With Timing Gear (WTG)</p> <p>Double-suction, self-priming twin screw pumps with external bearings and timing gear transmission. They are especially suitable for the delivery of fluids free of solids and/or with little abrasiveness.</p> 	
	<p>GX/X Series Sliding Vane Pumps</p> <p>Designed for transfer and loading/unloading of feedstocks and end products in all types of terminal applications. Offering high-suction capabilities, this pump is especially suited for pumping from bulk plants, stripping lines and completely removing the heel from rail and transport tankers.</p>	<p>S Series Twin Screw Pumps With Non-Timing Gear (NTG)</p> <p>Single-suction design where axial pressure on the hydraulic components is compensated for by a balance piston and metal contact exists between the screw profiles and casing bore. Ideal for transfer of high-viscosity lubricating fluids, such as bitumen and residual oil, at medium or high temperatures.</p> 	
	<p>NP/SNP Sliding Vane Pumps</p> <p>Designed for the handling of clean, non-corrosive liquids at varying temperatures, pressures and viscosities, NP pumps offer maximum versatility in loading/unloading and transfer applications. The stainless-steel construction of the SNP line makes it ideal for handling a variety of corrosive or caustic fluids, which is a crucial consideration in the chemical industry.</p>		<p>S Series Triple Screw Pumps</p> <p>Features a male drive spindle, two female secondary spindles and a case that holds the screws, allowing the liquid to move along the axial direction smoothly and continuously from suction to discharge. Ideal for use with liquids across a wide range of viscosities, temperatures and pressures.</p>



Pump Type	Bulk Transfer		In-Plant			Transportation
	Loading/ Unloading	In-Line Blending	Blending/ Mixing	Packaging	Loading/ Unloading	Transport & Tank Truck
GX/X Series	•	•	•	•	•	
ML/HXL Series	•		•		•	
TXD Series						•
NP/SNP Series	•			•	•	
System One®	•		•		•	
S Series Screw Pumps	•				•	

Blackmer positive displacement sliding vane pumps:

- Are designed specifically for reliable continuous-duty operation
- Set the industry standard for low- and medium-viscosity process and transfer applications
- Improve production yields – self-priming, high-suction pumps strip lines of residual product

System One® centrifugal pumps:

- Are built specifically for the toughest, hard-to-seal applications
- Set the industry standard for seal integrity and extended bearing life

Blackmer positive displacement screw pumps:

- Meet a wide range of applications given multiple port configurations and material options
- Produce the highest flow rates achievable by rotary PD pumps
- Suitable for a wide range of viscosities.



Where Innovation Flows



PSG® Grand Rapids
1809 Century Avenue SW
Grand Rapids, MI 49503-1530 USA
T: +1 (616) 241-1611
F: +1 (616) 241-3752
blackmer.com

PSG® reserves the right to modify the information and illustrations contained in this document without prior notice. This is a non-contractual document. 05-2016

Authorized PSG® Partner: