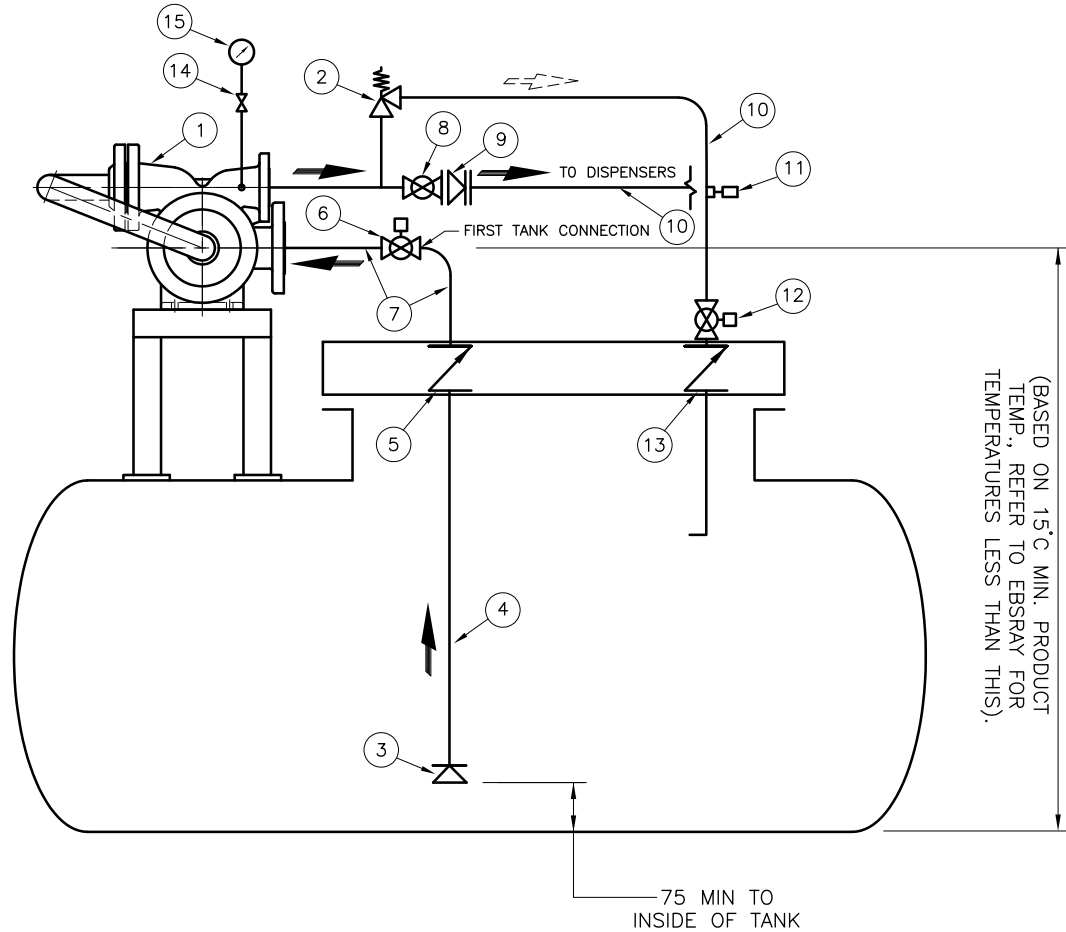


### IMPORTANT NOTES

- 1 This P&ID is **TYPICAL ONLY** and Only Relates to the Specifications of the Minimum Equipment Required to Ensure the Optimum Performance, Maximum Life and Trouble-Free Operation of the Ebsray RB10 Pumpset and the Pumping System in General.
- 2 This P&ID Does **NOT** Depict:
  - 2.1 Ancillary Required Equipment Related to the Fabrication, Installation and Operation of the Pumpset e.g. Misc. Flanges, Fittings, Etc..
  - 2.2 Required Equipment unrelated to the Pumpset e.g. Tank Fill Lines, Vapour Return Lines, Emergency Shutdown Systems, Etc.
  - 2.3 The Materials and Method of Fabrication and/or Installation of the Tank and Required Sub-Systems.
- 3 It is the Responsibility of the Designer, Fabricator and the Installer of Each Actual Tank and Required Sub-Systems to Ensure that:
  - 3.1 The Ebsray Specifications within this P&ID and any other Relevant Ebsray Documents are **STRICTLY** Adhered to.
  - 3.2 Any Variation (Including Use of Equipment Deemed "Equivalent") or Addition to the Ebsray Specifications, as Related to the Pumpset and the Pumping System in General, meet Ebsray's Minimum Requirements.
  - 3.3 All Design, Fabrication and Installation of the Tank and Required Sub-Systems is **STRICTLY** in Accordance with all Relevant Federal, State and Local Codes, Regulations and Standards.
- 4 Ebsray Reserves the Right to:
  - 4.1 Withdraw or Alter Any or All of the Ebsray Specifications within this P&ID and any other Relevant Ebsray Documents without Notification.
  - 4.2 Determine the Validity of Any Warranty Claims for Ebsray Equipment Based on the Proper Application of Ebsray Supplied Equipment by the way of Adherence to the Ebsray Specifications within this P&ID and any other Relevant Ebsray Documents.



100% PROPANE - 4.0m MAX.  
 100% BUTANE - 2.6m MAX.  
 50:50 MIX - 3.3m MAX.  
 (BASED ON 15°C MIN. PRODUCT TEMP., REFER TO EBSRAY FOR TEMPERATURES LESS THAN THIS).

75 MIN TO INSIDE OF TANK

**TYPICAL ONLY**

ITEM	DESCRIPTION	SUPPLY	QTY
1	EBSRAY 'RB10' PUMPSET FLANGED 50NB INLET, 25 NB DISCHARGE ANSI 300	EBSRAY	1
2	EBSRAY RV18-VRS19 BYPASS VALVE FLANGED 25 NB ANSI 300	EBSRAY	1
3	EBSRAY SOFT SEATED NON-RETURN VALVE L850002 50 NB (F)NPT	EBSRAY	1
4	50 NB PIPE (PUMP INLET - IN TANK)	COM'L	1
5	50 NB EXCESS FLOW VALVE REGO A3292C (OR EQUAL)	COM'L	1
6	40 NB FULL BORE PNEUMATIC ACTUATED BALL VALVE	COM'L	1
7	40 NB PIPE (PUMP INLET-ABOVE GROUND)	COM'L	1
8	25 NB FULL BORE (MIN) BALL VALVE	COM'L	1
9	32 NB (MIN) SOFT SEATED 'IN-FLANGE' BACK CHECK VALVE	COM'L	1
10	32 NB PIPE (PUMP DISCHARGE & BYPASS RETURN)	COM'L	1
11	8 NB HYDROSTATIC RELIEF VALVE	COM'L	1
12	25 NB FULL BORE (MIN) PNEUMATIC ACTUATED BALL VALVE	COM'L	1
13	25 NB (MIN) EXCESS FLOW VALVE (NOT NON-RETURN VALVE)	COM'L	1
14	8 NB ISOLATION VALVE	COM'L	1
15	63mm, 0-2500 kPa PRESSURE GAUGE	COM'L	1

					 <b>EBS-RAY PUMPS PTY.LTD</b> ABN 52 000 061 003 628 Pittwater Road Ph.(61 2) 9905 0234 Brookvale NSW 2100 Fax(61 2) 9938 3825 Australia www.ebsraypumps.com.au		TITLE: TYPICAL INSTALLATION P&ID-AUS EBSRAY RB10 PUMP SCALE: NA DATE: 20-06-01 DRAWN: K.D.N. CHK.D: J.J.D. APPR.: COMP.No: A312001K DRG.No: A312001K REV. A		
					UNLESS STATED OTHERWISE ALL DIMENSIONS IN MILLIMETRES				
REV	DATE	DESCRIPTION	REV. BY	CKD. BY			APPR. BY		
A	21.08.02	ITEM 6 WAS VERTICAL UPDATED AS DRAWN	J.J.D.	J.J.D.					