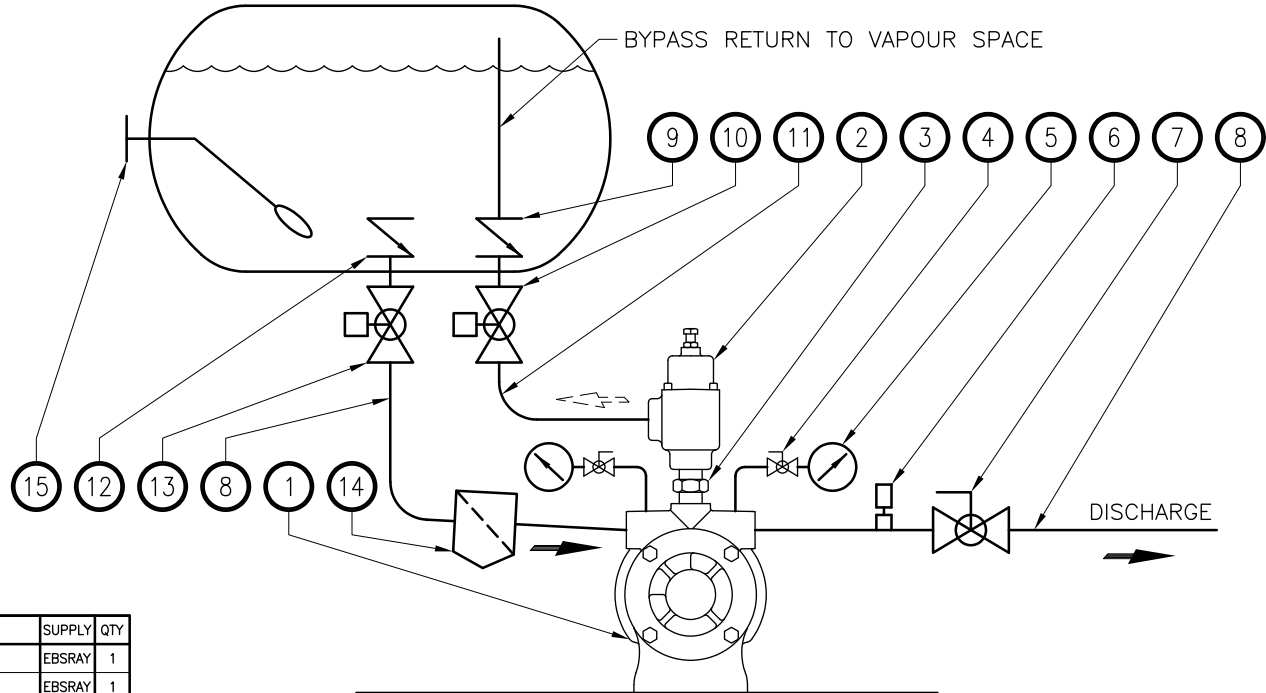


### IMPORTANT NOTES

- 1 This P&ID is **TYPICAL ONLY** and only relates to the specifications of the minimum equipment required to ensure the optimum performance, maximum life and trouble-free operation of the Ebsray RC20/RC25 Pumpsets and the pumping system in general.
- 2 This P&ID does **NOT** depict:
  - 2.1 Ancillary required equipment related to the fabrication, installation and operation of the Pumpset e.g. misc. flanges, fittings, etc..
  - 2.2 Required equipment unrelated to the Pumpset e.g. tank fill lines, vapour return lines, emergency shutdown systems, etc.
  - 2.3 The materials and method of fabrication and/or installation of the tank and required sub-systems.
- 3 It is the responsibility of the designer, fabricator and the installer of each actual tank and required sub-systems to ensure that:
  - 3.1 All design, fabrication and installation of the tank and required sub-systems is **STRICTLY** in accordance with all relevant Federal, State and Local Codes, Regulations and Standards.
  - 3.2 The Ebsray Specifications within this P&ID and any other relevant Ebsray Documents are **STRICTLY** adhered to.
  - 3.3 Any variation (including use of equipment deemed "equivalent") or addition to the Ebsray Specifications, as related to the Pumpset and the pumping system in general, meet Ebsray's minimum requirements.
- 4 Ebsray reserves the right to:
  - 4.1 Withdraw or alter any or all of the Ebsray Specifications within this P&ID and any other relevant Ebsray Documents without notification.
  - 4.2 Determine the validity of any warranty claims for Ebsray Equipment based on the proper application of Ebsray supplied equipment by the way of adherence to the Ebsray Specifications within this P&ID and any other relevant Ebsray Documents.




ITEM	DESCRIPTION	SUPPLY	QTY
1	EBSRAY RC20/RC25 PUMPSET THREADED 1" NPT INLET, DISCHARGE PORTS	EBSRAY	1
2	EBSRAY RV18 BYPASS VALVE THREADED 1" NPT (SEE TABLE)	EBSRAY	1
3	1" NPT SCHEDULE 80 HEX NIPPLE	EBSRAY	1
4	DN 8 ISOLATION VALVE	COM'L	2
5	63mm, 0-2500 kPa (0-25 BAR) PRESSURE GAUGE	COM'L	2
6	DN8 HYDROSTATIC RELIEF VALVE	COM'L	1
7	DN25 (MIN) BALL VALVE	COM'L	1
8	DN25 (MIN) SCHEDULE 80 PIPE (PUMP INLET AND DISCHARGE)	COM'L	1
9	EXCESS FLOW VALVE FOR BYPASS RETURN (NOT NON-RETURN VALVE)	COM'L	1
10	DN20 (MIN) FULL BORE PNEUMATIC/SOLENOID ACTUATED BALL VALVE	COM'L	1
11	DN20 (MIN) SCHEDULE 80 PIPE (BYPASS RETURN TO TANK)	COM'L	1
12	EXCESS FLOW VALVE (PUMP INLET)	COM'L	1
13	DN25 (MIN) FULL BORE PNEUMATIC/SOLENOID ACTUATED BALL VALVE	COM'L	1
14	ADEQUATELY SIZED INLINE STRAINER	COM'L	1
15	LIQUID LEVEL GAUGE/ALARM	COM'L	1

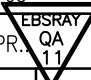
EBSRAY MODEL - DUTY	EBSRAY BYPASS VALVE SELECTION	SUPPLY	QTY
RC20 - 50HZ	EBSRAY RV18CBS2	EBSRAY	1
RC20 - 60HZ	EBSRAY RV18VRS10 or RV18CBS2	EBSRAY	1
RC25 - 50HZ	EBSRAY RV18VRS14 or RV18CBS2	EBSRAY	1
RC25 - 60HZ	EBSRAY RV18VRS14 or RV18CBS2	EBSRAY	1

TYPICAL ONLY

E	24.04.09	"(NOT NON-RETURN VALVE)" TEXT ADDED TO ITEM 9	J.J.D.	J.J.D.	
D	07.11.06	RC20-60Hz ADDED TO TABLE SELECTION TABLE UPDATED	J.J.D.	J.J.D.	
C	07.8.03	RC20 PUMPSET AND RV18VRS SELECTION TABLE ADDED	J.J.D.	J.J.D.	
B	31.7.03	ITEMS 14 AND 15 ADDED	J.J.D.	J.J.D.	
REV	DATE	DESCRIPTION	REV. BY	CKD. BY	APPR. BY

UNLESS STATED OTHERWISE ALL DIMENSIONS IN MILLIMETRES

  
**EBS-RAY PUMPS PTY.LTD**  
 ABN 52 000 061 003  
 628 Pittwater Road Ph.(61 2) 9905 0234  
 Brookvale NSW 2100 Fax(61 2) 9938 3825  
 Australia www.ebsraypumps.com.au

TITLE: TYPICAL INSTALLATION P&ID EBSRAY MODEL RC20/RC25 PUMPSET			
SCALE: NA	DATE: 11-07-03		
DRAWN: J.J.D.	CHK.D: J.J.D.	APPR.:	
COMP.No: A316001K	DRG.No: A316001K		REV. E