



# Expert Flow Solutions for Paint & Coatings

PAINT MARKET  
Product Brochure



Where Innovation Flows

ECCENTRIC DISC PUMPS  
PERISTALTIC (HOSE) PUMPS  
ROTARY VANE PUMPS



[mouvex.com](http://mouvex.com)

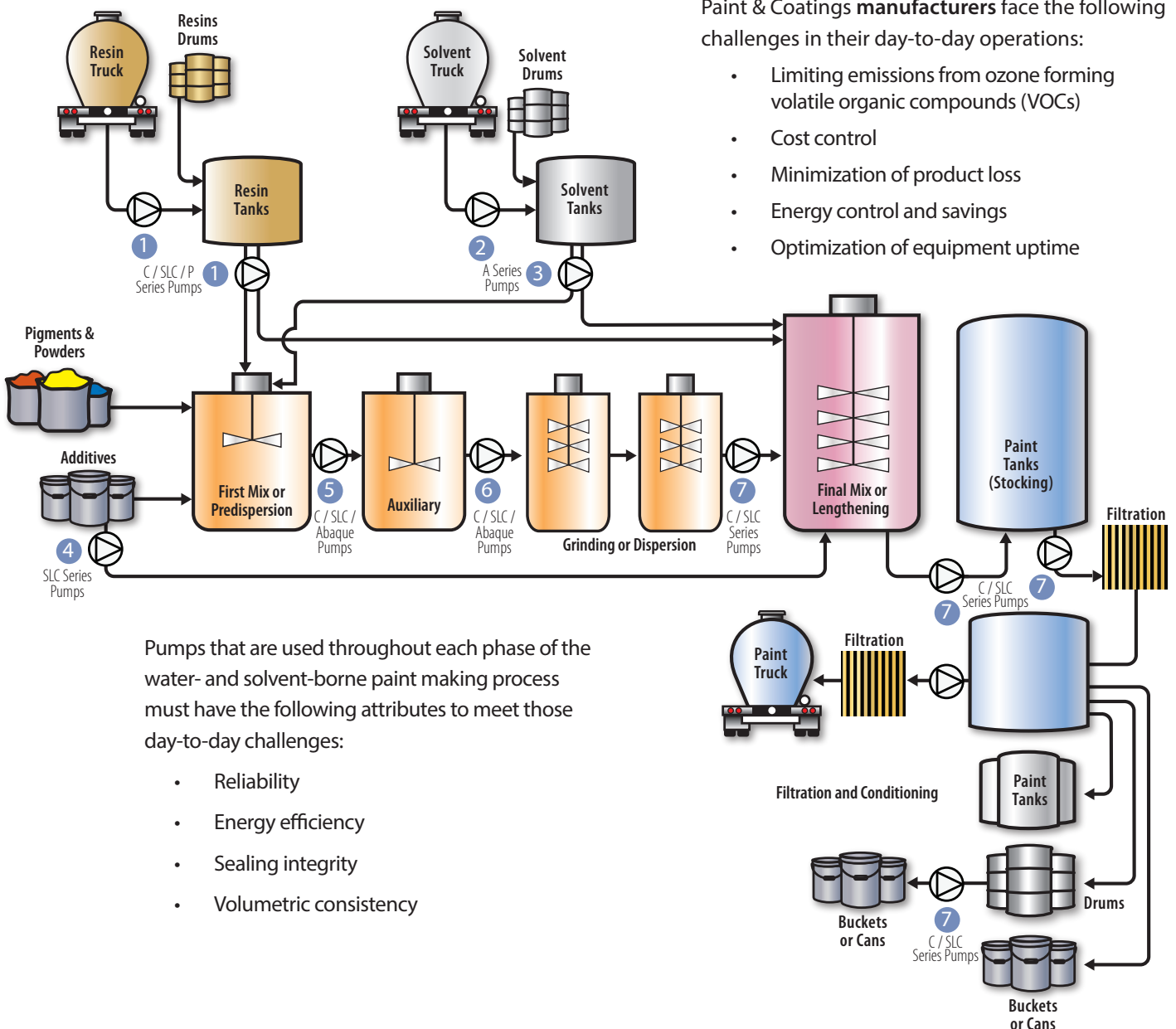
# Consistent. Efficient. Safe.

## Mouvex Pump Technologies are the Solution for Your Paint & Coatings Manufacturing Process

### Paint & Coatings Manufacturing Challenges:

Paint & Coatings **manufacturers** face the following challenges in their day-to-day operations:

- Limiting emissions from ozone forming volatile organic compounds (VOCs)
- Cost control
- Minimization of product loss
- Energy control and savings
- Optimization of equipment uptime



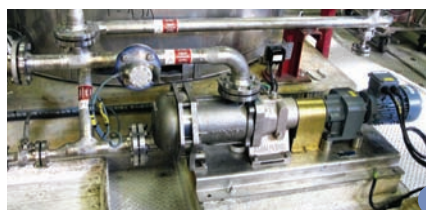


## Mouvex Pumps:

### The Solution for the Challenges of Paint & Coatings Production

- Consistent performance (flow, pressure, and volumetric efficiency) due to unique wear compensation system
- Product recovery (pipeline stripping), means profit recovery
- Non-pulsating, smooth flow
- Self-priming
- Easy and simple to maintain
- High volumetric efficiency
- No bushings in contact with the liquid (no polymerization risk)
- Low shear
- No temperature intake
- Ability to run dry, even in hazardous areas
- ATEX certified
- Clean-in-Place (CIP) capable for the ultimate in convenience and cleanliness
- Unique seal-less principle, no magnets involved

Mouvex® features a variety of leading pump technologies that include eccentric disc, rotary vane, and peristaltic to meet virtually any application challenge throughout the Paint & Coatings production process.

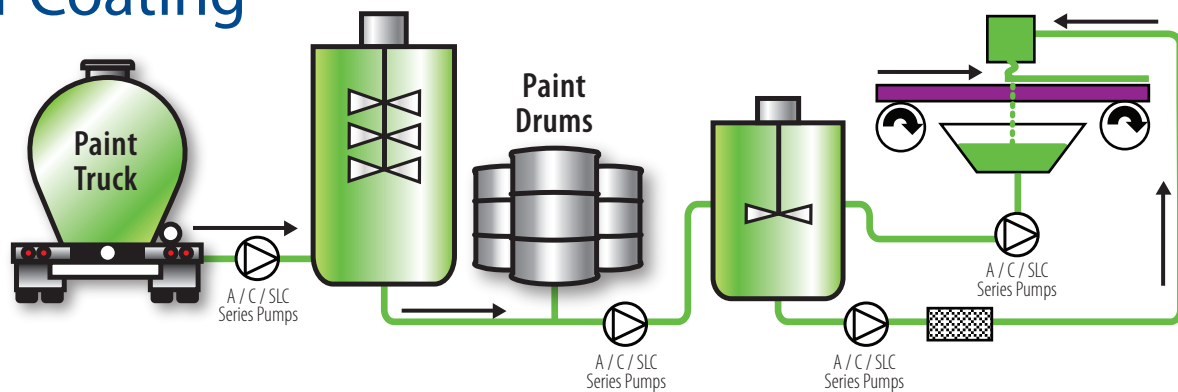




# Quality. Control. Uptime.

Mouvex Pump Technologies are the  
Solution for Your Paint & Coatings Process

## Roller Coating



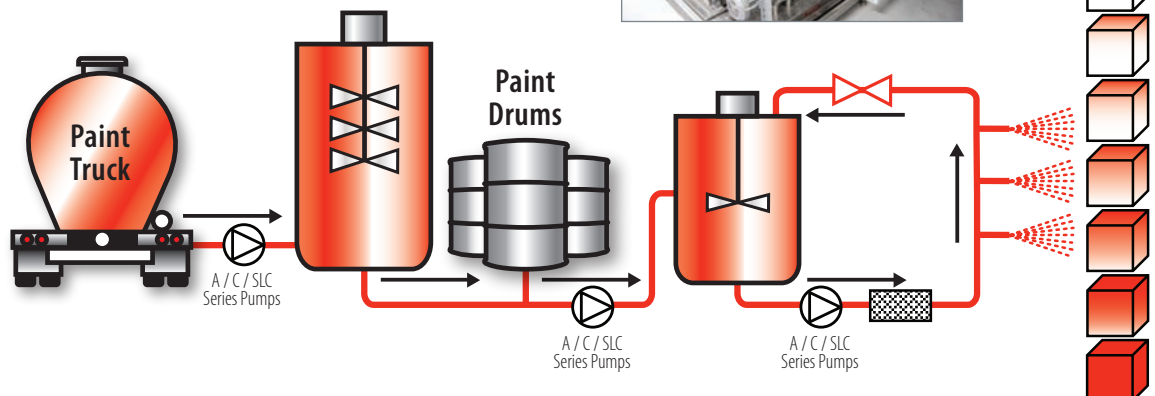
## Paint & Coatings User Challenges:

Paint & Coatings users face the following challenges in their day-to-day operations:

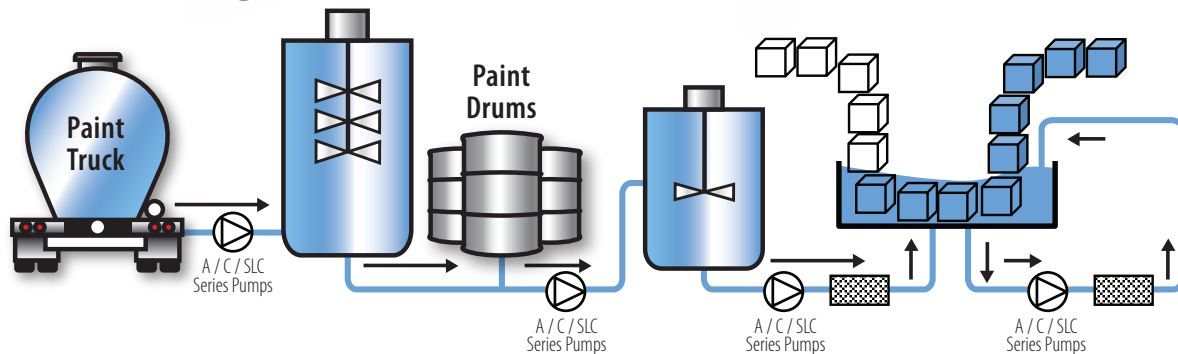
- Final quality of the coating or application of paint
- Cost control
- Minimization of product loss
- Energy control and savings
- Optimization of equipment uptime



## Spraying



## Dip Coating



## Mouvex Pumps:

### The Solution for the Challenges for Paint & Coatings Users

- Consistent performance (flow, pressure, and volumetric efficiency) due to unique wear compensation system
- Product recovery (pipeline stripping), means profit recovery
- Non-pulsating, smooth flow
- Self-priming
- Easy and simple to maintain
- High volumetric efficiency
- No bushings in contact with the liquid (no polymerization risk)
- Low shear
- No temperature intake
- Ability to run dry, even in hazardous areas
- ATEX certified
- Clean-in-Place (CIP) capable for the ultimate in convenience and cleanliness
- Unique seal-less principle, no magnets involved

# Reliability. Integrity. Consistency.

## Mouvex Pump Technologies: The Solution for Your Paint & Coatings Processes

Mouvex® features a variety of leading pump technologies that include eccentric disc, rotary vane, and peristaltic to meet virtually any application challenge throughout the Paint & Coatings production and usage process.

### A Series – Eccentric Disc Pump

The simple, reliable pump for basic fluids. Up to 55 m<sup>3</sup>/hr (242 gpm)



#### Applications:

- Solvents unloading
- Solvents transfer
- Additives Transfer

#### Features & Benefits:

- Line stripping
- Constant performance vs.
  - Pressure
  - Viscosity
  - Wear
- Easy and limited maintenance
- Runs in reverse, enabling the pumping back of various products
- Can transfer viscous, non-lubricating volatile or delicate fluids

### P Series – Rotary Vane Pump

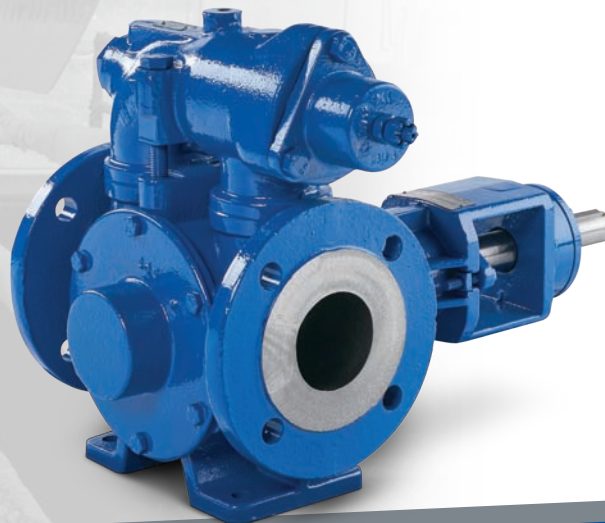
The heavy-duty pump for viscous resins unloading. Up to 110 m<sup>3</sup>/hr (484 gpm)

#### Applications:

- Resins unloading
- Transfer of non-lubricating, abrasive and corrosive products commonly found in Paint & Coatings applications

#### Features & Benefits:

- Line stripping
- Reversible
- On site replacement of wearing parts
- Easy and limited maintenance







## C Series – Eccentric Disc Pump

The versatile seal-less ductile pump for various applications. Up to 18 m<sup>3</sup>/hr (79.3 gpm)



### Applications:

- Resins transfer
- Predispersion outlet
- Grinding inlet
- Grinding outlet
- Stocking
- Conditioning

### Features & Benefits:

- Line stripping
- Product Recovery
- Constant performance vs.
  - Pressure
  - Viscosity
  - Wear
- No mechanical seals or bushings in contact with the liquid (no polymerization risk)
- Low shear

## SLC Series – Eccentric Disc Pump

The seal-less stainless steel pump for premium products. Up to 36 m<sup>3</sup>/hr (159 gpm)

### Applications:

- Resins transfer
- Predispersion outlet
- Grinding inlet
- Grinding outlet
- Stocking
- Conditioning

### Features & Benefits:

- Line stripping
- Product Recovery
- Constant performance vs.
  - Pressure
  - Viscosity
  - Wear
- No mechanical seals or bushings in contact with the liquid (no polymerization risk)
- Pulse-free, slip-free and low-shear flow even with varying viscosity and back pressure conditions.



## Abaque™ Series – Peristaltic (Hose) Pump

The pump able to withstand the most abrasive and solids loaded fluids. Up to 77 m<sup>3</sup>/hr (339 gpm)



### Applications:

- Pregrinding transfer
- Abrasive fluids transfer
- Moves everything from viscous, highly abrasive solutions to water without risk of damage to the pump
- Ideal for by-product and waste transfer

### Features & Benefits:

- High pressure
- Solid handling
- Low shear
- Easy and limited maintenance



## Where Innovation Flows



ZI la Plaine des Isles • 2 rue des Caillottes  
F-89000 AUXERRE - FRANCE  
T: + 33.3.86.49.86.30  
F: + 33.3.86.46.42.10  
[contact@mouvex.com](mailto:contact@mouvex.com)  
[mouvex.com](http://mouvex.com)

PSG® reserves the right to modify the information and illustrations contained in this document without prior notice. This is a non-contractual document. 12-2016

Authorized PSG Partner: