

Ball valve SB - SBL



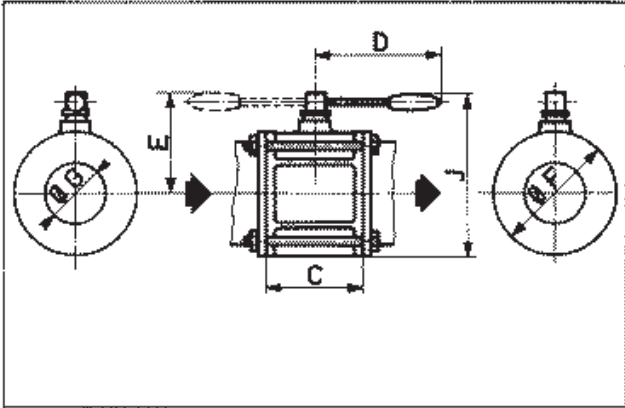
INSTALLATION

OPERATION

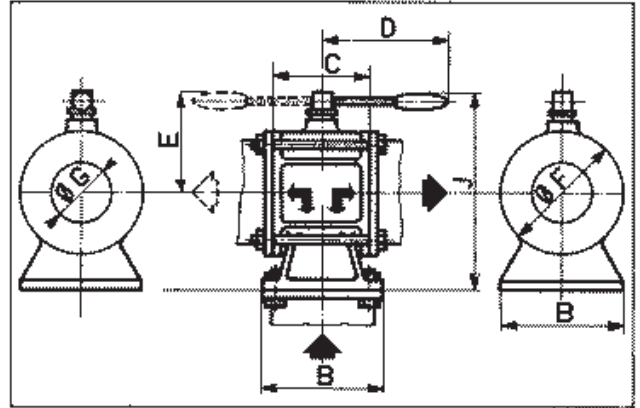
MAINTENANCE

NB : The specific instructions in valves SBL MF are included in the instructions for DMX - NT 1138.

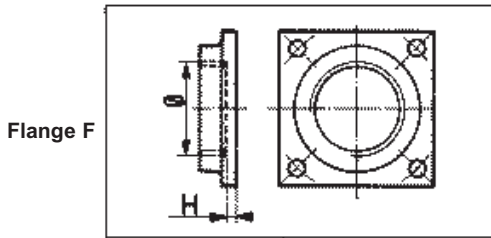
OVERALL DIMENSIONS



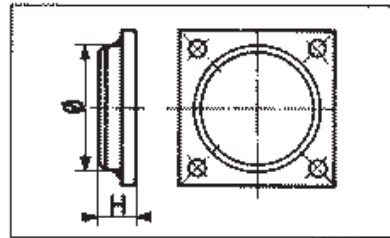
Valve, typ SB



Valve 3 ways L, typ SBL



Flange F



Flange S

Valves dimensions (mm)

CODE	Valve		Valve		Valve	
	SB	SBL	SB	SBL	SB	SBL
DIMENSIONS	Ø 2"		Ø 3"		Ø 4"	
B	-	94	-	123	-	166
C	65		90		126	
D	150		210		210	
E	70	98	100	110	112	134
F	90		125		168	
G	45		65		90	
J	132	170	160	203	210	245
Weight (kg)	0,95	1,2	1,5	2,2	2,3	4,7

Valves codes

F : Aluminium flanges, threaded according to standard NF E 03004

S : Steel flanges with ruffle, to weld

VALVES	2"		3"		4"
Threaded flanges dimensions Ø thread	F 40 G 1 1/2	F 50 G 2	F 65 G 2 1/2	F 80 G 3	F 100 G 4
Flanges to weld dimensions Ø pipe	S 40 48,3	S 50 60,3	S 65 76,1	S 80 88,9	S 100 114,3
H (mm) flange F	5		6		6
H (mm) flange S	33		42		48
Weight (mm) flange F	0,25		0,5		0,7
Weight (mm) flange S	0,5		1		1,7

G 1 1/2 : 40/49 PdG - G 2 : 50/60 PdG - G 2 1/2 : 66/76 PdG - G 3 : 80/90 PdG - G 4 : 102/114 PdG

MATERIAL DESCRIPTION

Ball valve :Typ SB.

Ball valve 3 ways L :Typ SBL.

Construction

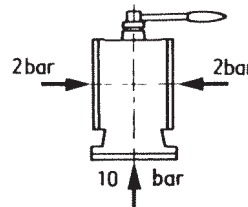
- Aluminium body valve, aluminium treated on polished surface.
- PTFE ball seals.
- Aluminium threaded flanges or steel weld flanges, mounted on valves.
- Flange seals, FKM.

DATA

Maximal temperature of use : 200°C

Normal pressure of operation :

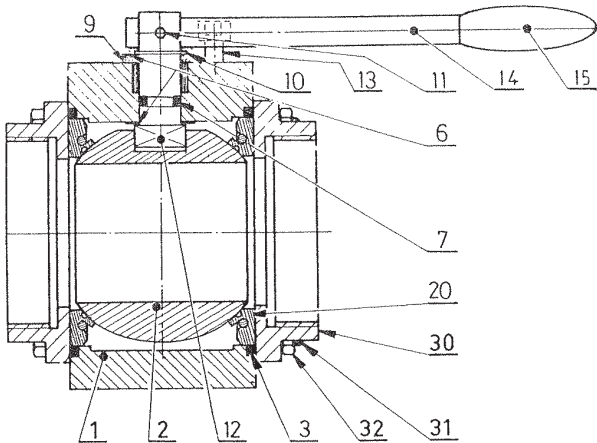
- Valve 2" and 3" ..10 bar
- Valve 4" 2 bar in all the ways,
.....10 bar in the commun way only



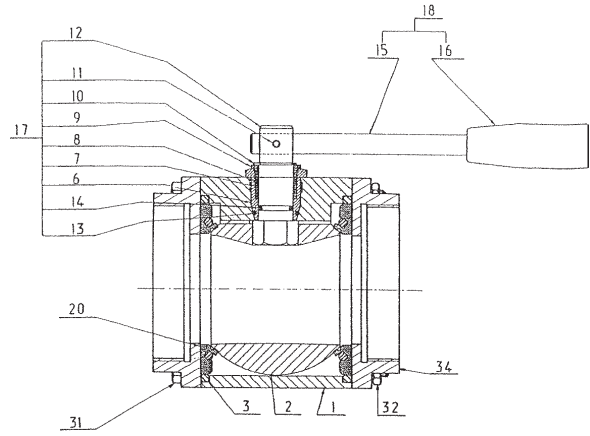
INSTALLATION

- Unscrew flange screws.
- Remove flanges leaving in place O-rings on the valve.
- Screw or weld (according to model) flanges on pipe. This must be done **in the absence of the valve** itself.
- Clean the installation (dust, welding materials).
- Fix the valve. All positions are possible.
- Make sure that O-rings are well in place.
- Make sure that the pipes are not pulling apart side of the ball.

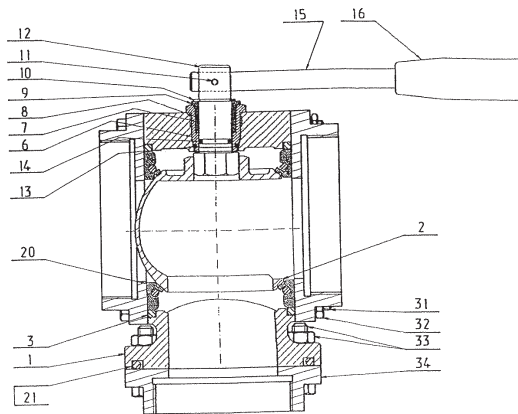
SPARE PARTS



SB2 valve



SB3 - SB4 valve



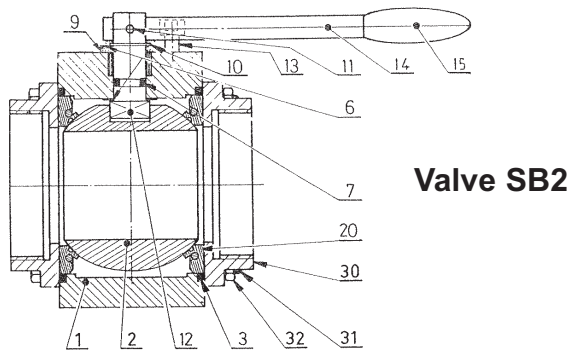
SBL 2 valve - 3 - 4 three ways

Reference			Quantity	Set of seals description
SB2	SB 3/4	SB 2/3/4		
	25		1	3 + 10 + 11 + 13 + 14 + 20 for SB3 + 21 for SB4
		25	1	3 + 10 + 11 + 13 + 14 + 20 + 21 for SBL 4
25			1	3 + 6 + 7 + 9 + 10 + 11 + 20

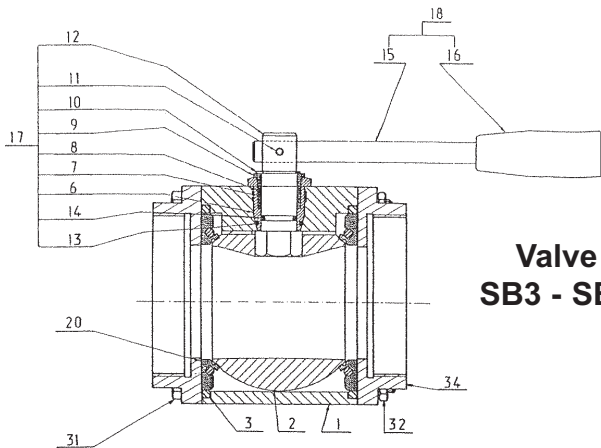
When ordering spare parts, please indicate :

- the TYP of the valve
- INSTRUCTIONS 1011-C00

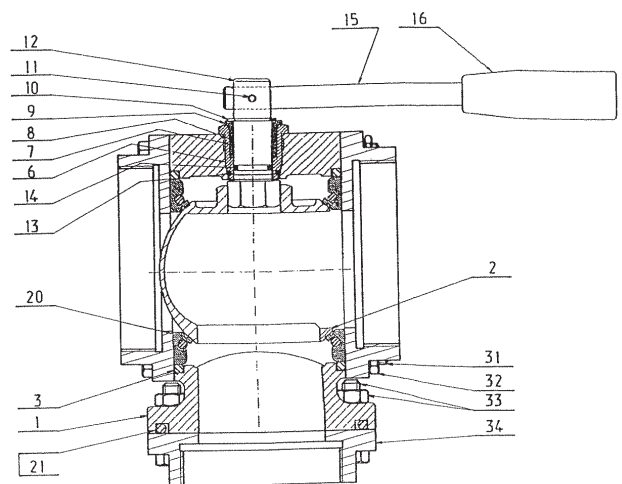
DISMANTLING - REASSEMBLY



Valve SB2



Valve SB3 - SB4



Valve SBL 2 - 3 - 4 three ways

Replacement of flange O-rings

- Before dismantling of valve, position handle **14** in the same direction as pipes.
- Unscrew the 4 screws **31** and nuts **32** (also bolts **33** for valve SBL type).
- Slide the valve out of the installation by making it slide. For SBL typ, **separate pipes by about 10 mn.**
- Remove O-rings **3** (and **21** for SBL) also seals **20** and replace them by news.

Replacement of handling axles (except SB2)

- Position handle **15** in the same direction as pipes.
- Remove pin **11** and remove handle **15**.
- Remove circlip **10**.
- Unscrew bolt **6** and take it away.

Take care not to leave axle **12** slide in the ball itself. Remove this axle **12**. Change seals **13** and **14**.

- Reassemble, replacing axle **12** in the groove of ball (taking care not to leave it slide inside). The lodging for the handle must be in the same axis as pipes.
- Screw up bolt **6** (do not loose the gasket of this bolt).
- Fix circlip **10**.
- Re-mount the handle **15** by taking care of putting it in the direction of the pipings and at the side discharge, without forgetting the pin **11**.

Replacement of handling axles (only for SB2)

- Before dismantling of valve, position handle **14** in the same direction as pipes.
- Unscrew the 4 screws **31** and nuts **32**.
- Slide the valve out of the installation by making it slide.
- Unscrew and remove screw **13**.
- Remove pin **11** and remove handle **14**.
- Remove circlip **10**, upper washer **6** and felt **9**.
- Remove seals **3** and **20**.
- Make the sphere **2** of 90° revolve and remove it by making it slide.
- Take out axle **12** by inside, remove o-ring **7** and remove lower washer **6**.
- Put back in place a new lower washer **6** and a new o-ring **7**.
- Put back in place axle **12** and sphere **2**, the lodging for the handle must be in the same axis as pipes.
- Assemble seals **3** and **20**.
- Fix a new felt **9**, a new upper washer **6** and circlip **10**.
- Re-mount the handle **14** by taking care of putting it in the direction of the pipings and at the side discharge, without forgetting the pin **11**.

MAINTENANCE

SB or SBL (three ways L) valves need no periodical maintenance.